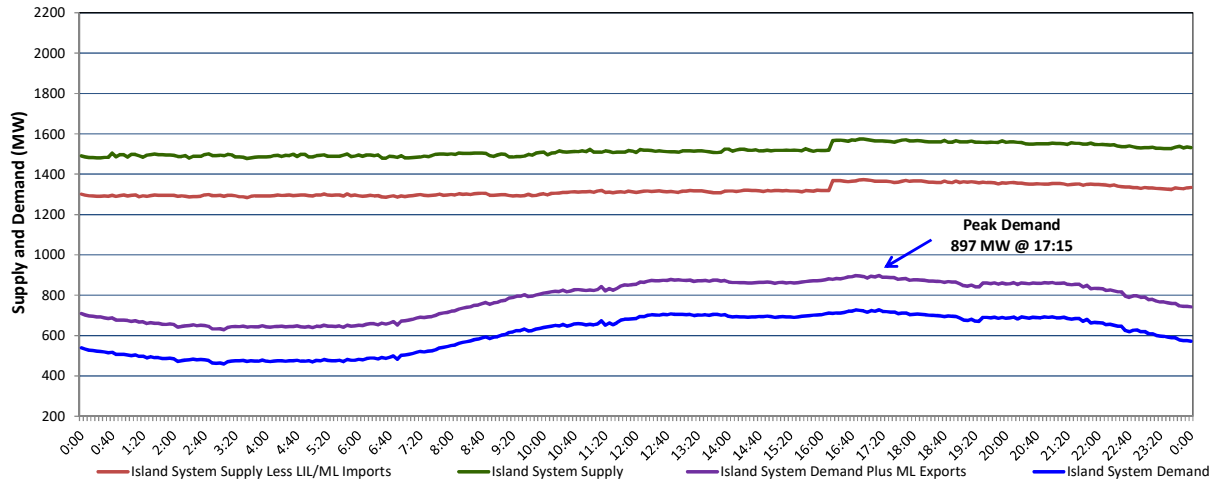


Newfoundland Labrador Hydro (NLH) Supply and Demand Status Report Filed Tuesday, June 27, 2023

Section 1 Island Interconnected System Supply, Demand & Exports Actual 24 Hour System Performance For Sunday, June 25, 2023



Supply Notes For June 25, 2023

1,2

- A As of 0701 hours, March 06, 2023, Upper Salmon Unit unavailable due to planned outage (84 MW).
- B As of 0006 hours, April 09, 2023, Holyrood Unit 3 unavailable due to planned outage (150 MW).
- C As of 1600 hours, May 15, 2023, Holyrood Unit 1 available but not operating (170 MW).
- D As of 0800 hours, May 21, 2023, Holyrood Unit 2 unavailable due to planned outage (170 MW).
- E As of 1751 hours, May 24, 2023, Bay d'Espoir Unit 5 unavailable due to planned outage (76.5 MW).
- F As of 1407 hours, June 18, 2023, Granite Canal Unit unavailable due to planned outage (40 MW).
- G **At 1613 hours, June 25, 2023, Stephenville Gas Turbine available (50 MW).**

Section 2 Island Interconnected Supply and Demand

Mon, Jun 26, 2023	Island System Outlook ³		Seven-Day Forecast	Temperature (°C)		Island System Daily Peak Demand (MW)	
				Morning	Evening	Forecast	Adjusted ⁷
Available Island System Supply: ⁵	1,552	MW	Monday, June 26, 2023	6	6	1,150	1,150
NLH Island Generation: ^{4,8}	1,000	MW	Tuesday, June 27, 2023	8	10	1,110	1,110
NLH Island Power Purchases: ⁶	130	MW	Wednesday, June 28, 2023	13	17	735	735
Other Island Generation:	215	MW	Thursday, June 29, 2023	19	19	720	720
ML/LIL Imports:	207	MW	Friday, June 30, 2023	17	13	735	735
Current St. John's Temperature & Windchill:	6 °C	N/A °C	Saturday, July 1, 2023	16	13	730	730
7-Day Island Peak Demand Forecast:	1,150	MW	Sunday, July 2, 2023	16	16	735	735

Supply Notes For June 26, 2023

3

- Notes:
1. Generation outages for running and corrective maintenance are included. These are not unusual for power system operations. They generally do not impact customer supply. The power system operators schedule outages to system equipment whenever possible to coincide with periods when customer demands are low and sufficient supply reserves are available. However, from time to time equipment outages are necessary and reserves may be impacted.
 2. Due to the Island system having no synchronous connections to the larger North American grid, when there is a sudden loss of large generating units there may be a requirement for some customer's load to be interrupted for short periods to bring generation output equal to customer demand. This automatic action of power system protection, referred to as under frequency load shedding (UFLS), is necessary to ensure the integrity and reliability of system equipment. Under frequency events have typically occurred 5 to 8 times per year on the Island Interconnected System and the resultant customer load interruptions are generally less than 30 minutes. With the activation of the Maritime Link frequency controller during the winter of 2018, UFLS events have occurred less frequently.
 3. As of 0800 Hours.
 4. Gross output including station service at Holyrood (24.5 MW) and improved NLH hydraulic output due to water levels (35 MW).
 5. Gross output from all Island sources (including Note 4).
 6. NLH Island Power Purchases include: CBPP Co-Gen, Nalcor Exploits, Rattle Brook, Star Lake, Wind Generation and capacity assistance (when applicable).
 7. Adjusted for curtailable load, market activities and the impact of voltage reduction when applicable.
 8. Due to limitations inherent in the design of combustion turbines, the output of combustion turbines may be reduced in the event that ambient temperatures exceed the threshold

Section 3 Island Peak Demand Information Previous Day Actual Peak and Current Day Forecast Peak

Sun, Jun 25, 2023	Actual Island Peak Demand ⁹	17:15	897 MW
Mon, Jun 26, 2023	Forecast Island Peak Demand		1,150 MW

Notes: 9. Island Demand / LIL / ML Exports (where applicable) is supplied by NLH generation and purchases, plus generation owned and operated by Newfoundland Power and Corner Brook Pulp & Paper (Deer Lake Power, DLP).